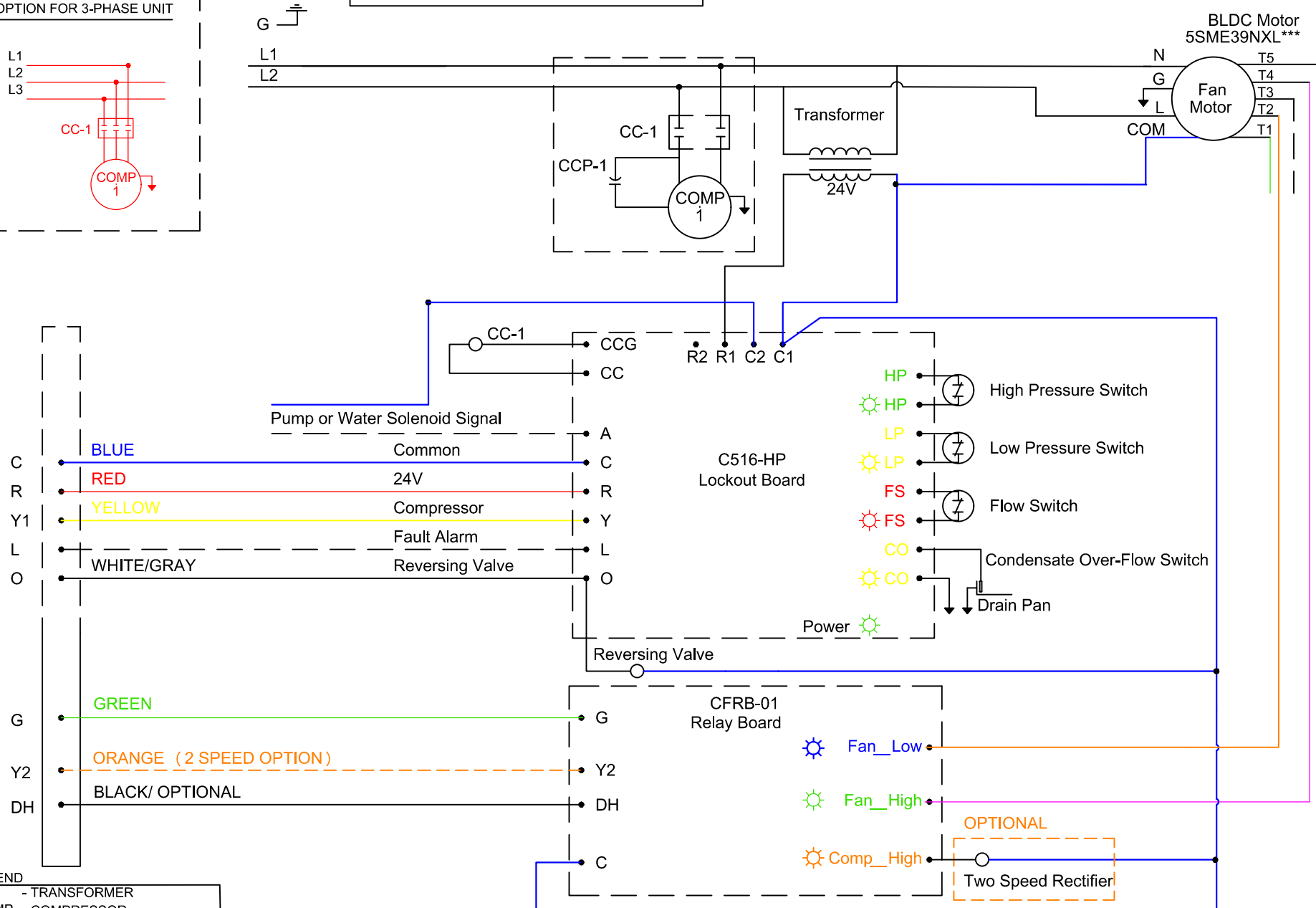


1 COMP 1 CIRCUIT - SINGLE PHASE

ECM Motor-LED Board-Relay Board



LEGEND

TR	- TRANSFORMER
COMP	- COMPRESSOR
CC-1	- CONTACTOR 1
CCP	- COMPRESSOR CAPACITOR

NOTES: Compressor & blower motor internally thermally protected. For line voltage wiring use copper conductors only. All wiring to the unit must comply with local electrical codes.

REV: 1 01/01/2023